

# **CHILD GUIDANCE CENTRE**

**ISSUED BY**  
**MIZORAM STATE CHILD PROTECTION SOCIETY (MSCPS)**  
**(INTEGRATED CHILD PROTECTION SCHEME)**  
**SOCIAL WELFARE DEPARTMENT**  
**GOVERNMENT OF MIZORAM**



**Verdant Ridge H.No. L-61/E-1/B**  
**Dunglena Building, 1<sup>st</sup> Floor, Laipuitlang**  
**Aizawl, Mizoram - 796012**  
**Phone : (0389) 2396334**  
**Email : mizoramcgc@gmail.com**

## **CHILD GUIDANCE CENTRE (CGC)**

Child Guidance Centre (CGC) hi State Child Protection Society (SCPS) hnuai project pakhat a ni a, September 2014 atang khan Mizoramah bul tan a ni. CGC in a tum ber leh a ngaih pawimawh ber chu naupang leh tleirawl (kum 18 hnuai lam) zinga rilru, taksa leh an nitin nunphunga harsatna hrang hrang tawkte thiam taka enkawl leh nun pangngai / nunphung hmasawna an neih theih nana tanpui hi a ni.

### **CGC CHU TUTE TAN NGE ?**

Naupang leh tleirawl, rilru leh taksa leh midangte nena khawsak ho kawnga harsatna hrang hrang nei -

- Zirna leh rilru sawrbing kawnga harsatna neite,
- Midangte nena inbiak pawhna, tawngka emaw zaizir emaw pawha harsatna neite,
- Rilru lama harsatna neite, nunphung zirna kawngte leh ngaihtuahna hman kawnga harsatna neite,
- Taksa lama harsatna neite,
- Accident vang emaw tharum tawrh tawh vanga rilru / thinlung lama harsatna neite,
- IQ test mamawhte,
- Naupang leh tleirawl dinhmun hlauhawma ding mekte,

A chung a harsatna hrang hrang nei / tawk naupang leh tleirawl a duh apiangte tan CGC hi office hun chungin englai pawha pan theih reng a ni a, a thlawnin enkawl na hi an dawng thei a ni.

## CGC IN SERVICE A PEK THEIhte

CGC ah hian heng thiamna bik nei hrang hrangte hi rawn theih reng an ni:

- *Clinical Psychologist* : Clinical Psychologist hian rilru lama buaina / harsatna neite, nungchang / nunphunga harsatna neite leh naupan laia harsatna tawh tawhte, an harsatna hrang hrangte endika zirchiangin thiam takin a enkawl thin a, awmze nei taka ruahmannate siamin nunphung pangaia an let leh theih nan a tanpui thin.



*Pic. Clinical Psychologist-in naupang IQ a test lai.*

- *Speech Therapist* : Speech Therapist hian inbiakpawhna lama harsatna hrang hrang neite, an harsatna a zir zelin a enkawlin a tanpui thin. An hmasawn dante chhinchhiahin thiamna / hmanraw hrang hrang hmangin a zirtir thin.



*Pic. Naupangin speech therapy a la lai.*

• *Physiotherapist* : Physiotherapist hian inhliam vang emaw, damlohna vang emaw, taksaa rualbanlohna vang emawa harsatna hrang hrang neite, an harsatnate chhuia zirchiangin an taksaa lo hmasawn leh theih nan thiamna chi hrang hrang hmangin a enkawl thin.



*Pic. Naupangin exerciseball hmanga sensory integration therapy a la lai.*

• *Occupational Therapist* : Occupational Therapist chuan naupang / tleirawl an nitin nundanphung leh an zirna kawnga hma an sawn theih nante, pianphunga harsatna tawk ten ngai an awh leh theih nante, midangte ruala ke an pen ve theih nante, an harsatna hrang hrangte chhuia zirchiangin thiamna chi hrang hrang hmangin a enkawlin a tanpui thin.



*Pic. Naupangin rehabilitation exercise a la lai*

- *Special Educator* : Special Educator chuan naupang / tleirawl a bik taka enkawl ngai, rilru leh pianphunga harsatna hrang hrang neite zirtima pein hma an sawn theih nan a tanpui thin.



*Pic. Naupangin Abacus hmangin chhiar a zir*

- *Sign Language Teacher* : Sign Language Teacher hian naupang / tleirawl ri hriatna lama harsatna neite midangte nena an inbiak pawh theih nante, an mahni duhzawng leh an harsatnate an sawi chhuah ve theih nante, zirna lama hma an sawn ve theih nante a bik taka thiamna hmangin a zirtir thin.

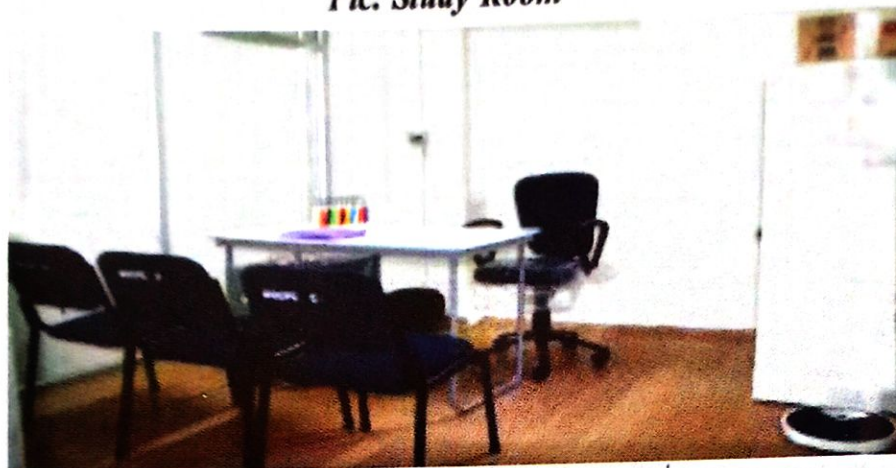


*Pic. Naupangten sign language an zir lai.*

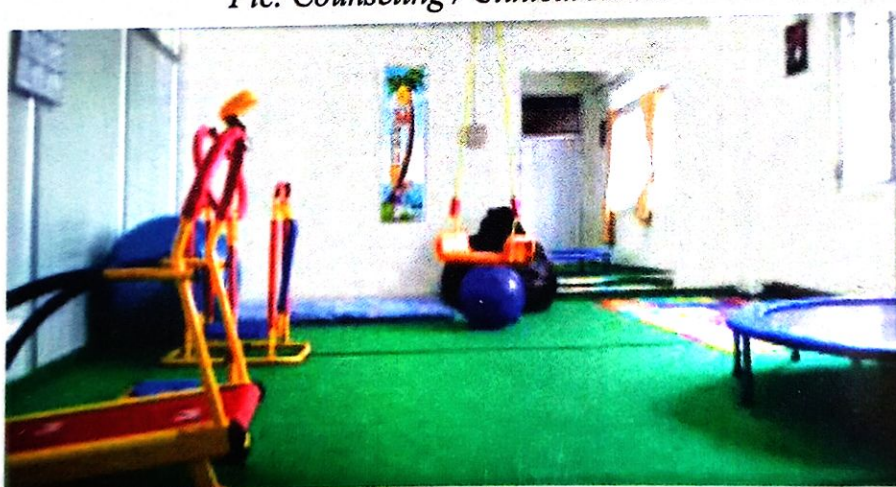
Heng thiamna bik nei hrang hrangte hian naupang / tleirawl he centre a lo kalte, an harsatna zirchiangin an lo tanpui thin a, he Child Guidance Centre (CGC) hi miten an hlutin an tangkai pui hle thin a ni.



*Pic. Study Room*



*Pic. Counseling / Clinical Room*



*Pic. Therapy Room*



*Pic. Play Area*

**Child Line Phone No. : 9774222275/1098 (Toll Free)**